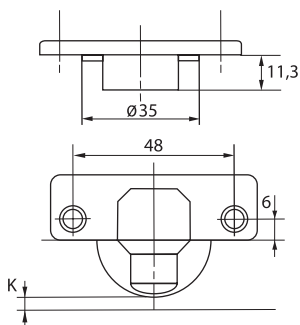




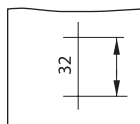
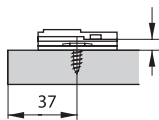
Profundidade do caneco: 11,3 mm  
 Diâmetro do caneco: 35 mm  
 Abertura: 110°  
 Espessura da porta: de 15 até 26 mm  
 K: de 3 a 7 mm  
 Embalagem: Vide tabela

Código	Descrição	Emb.
51MKH5M5000T000	MKH Click Reta 125°	250
51MSH505000TB	MSH Click Reta 110°	250
51MSH505080TB	MSH Click Curva 110°	250
51MSH505150TB	MSH Click Alta 110°	250
51MSH83M5350TB	MSH83 Click para Canto	50
51MSH8505450TB	MSH85 Click 45°	50
51MSH8505900TB	MSH85 Click Ângulo Cego	50
51MWH505000TB	MWH Click Reta 175°	50
51MWH505080TB	MWH Click Curva 175°	50

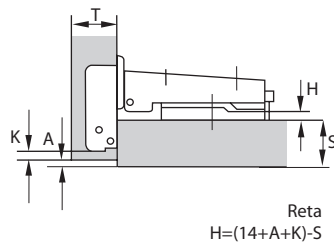
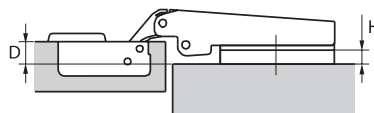
## Sistema de Fixação



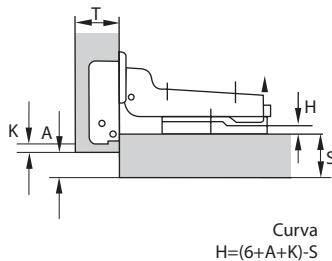
**Calço**  
Embalagem: 500 peças por caixa



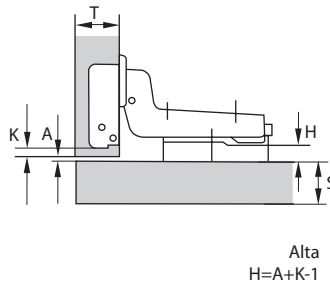
Altura	Material
H=0	aço
H=2	aço
H=4	aço
H=6	aço



Reta



Curva



Alta