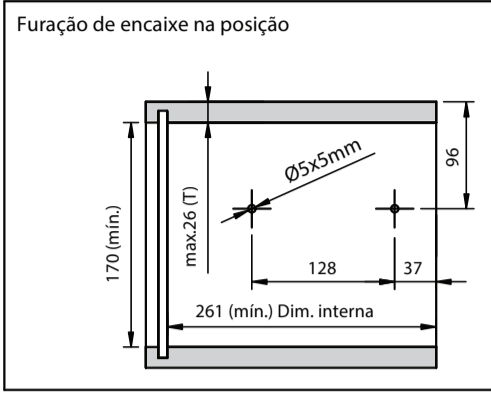
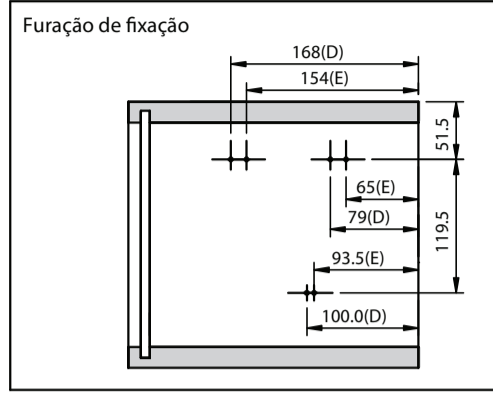


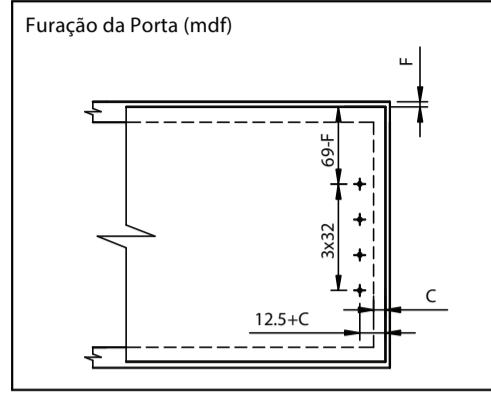
Dimensões para instalação:



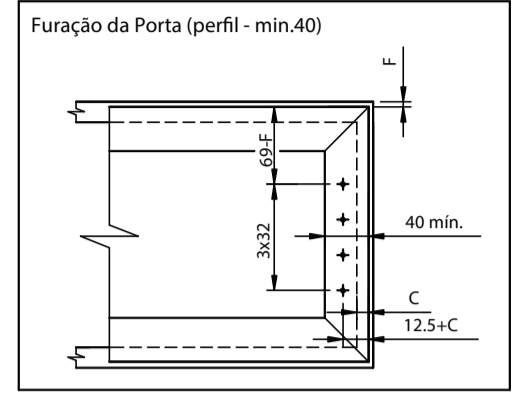
Usar gabarito de furação



Parafuso Ø4x35 (6x)
(pré furos no gabarito de furação)

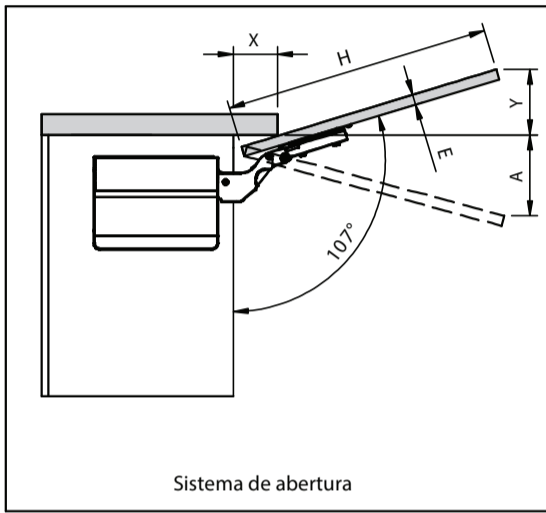


Parafuso Ø4x16 (8x)

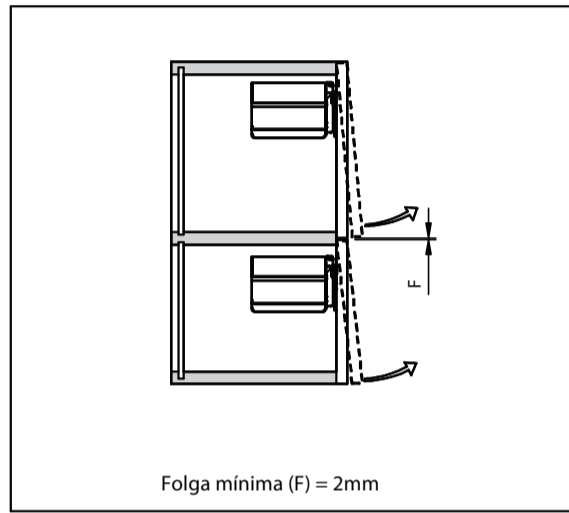


Parafuso M4x11 (8x)

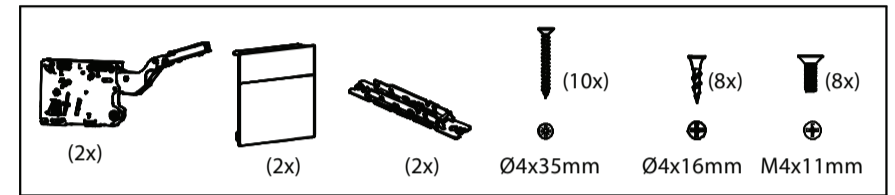
Posição e abertura da porta



Esquema portas sobrepostas



Componentes:



Dimensões do móvel

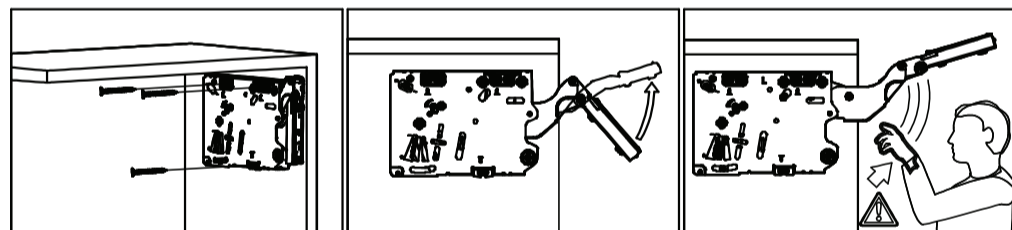
AeroMax Slow	
Modelo	Dimensão H
Slow L	250-500mm
Slow M	350-500mm
Slow H	400-700mm

E (mm)	16	19	22	26	28
X (mm)	70	58	49	35	26

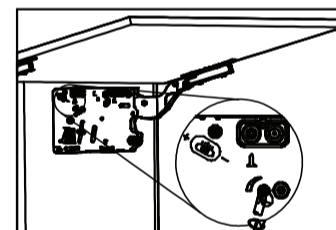
Abertura da Porta

Sem limitador (107°) $Y = (H \times 0,29) - 15 + E$
 Com limitador 100° $Y = (H \times 0,17) - 15 + E$ (*) Acessório
 Com limitador 75° $A = (H \times 0,26) + 15 - E$ (*) Acessório

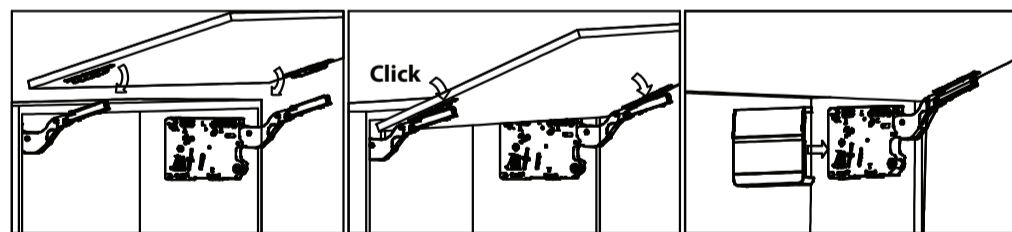
Fixação e Manuseio do Sistema



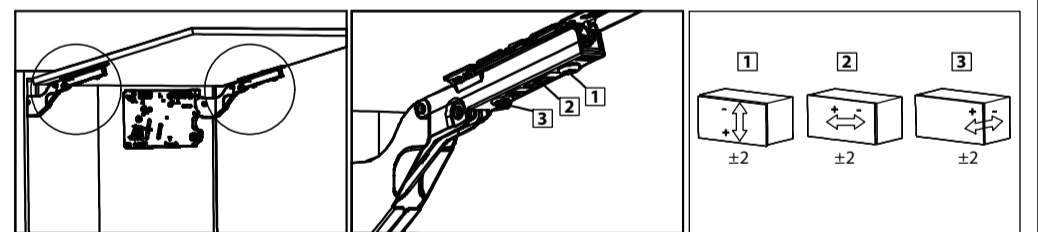
Ajuste do movimento (velocidade de fechamento)



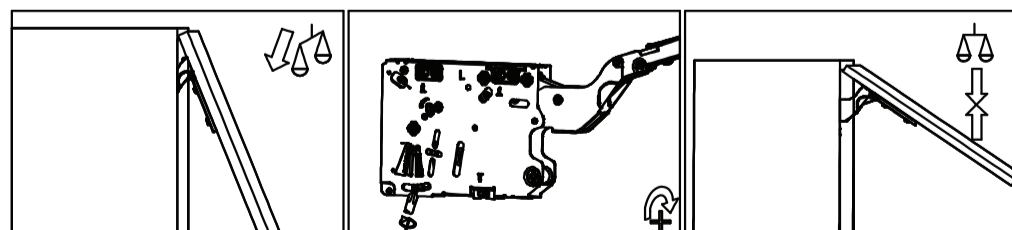
Montagem da Porta e Capa (Tampa)



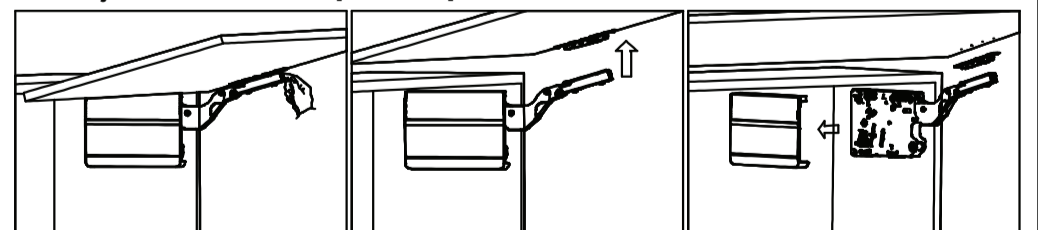
Regulagens da Porta



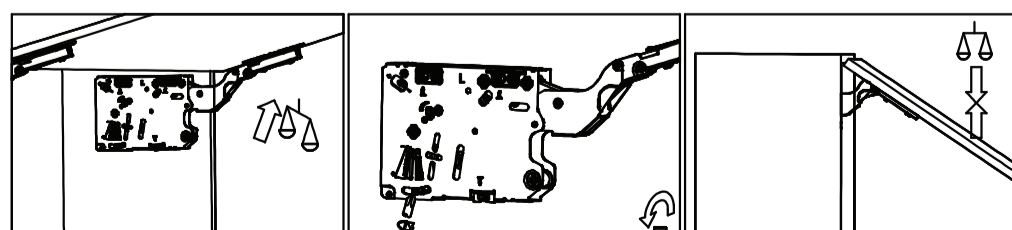
Ajuste e Regulagem Força (01)



Remoção de Porta e Capa (Tampa)



Ajuste e Regulagem Força (02)



Opção de encaixe de limitadores

