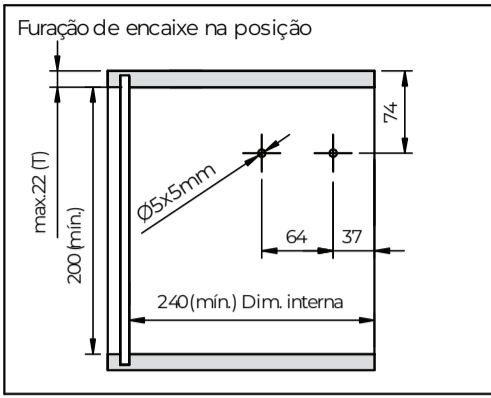
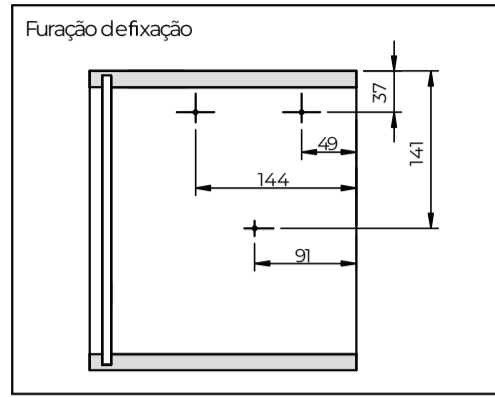


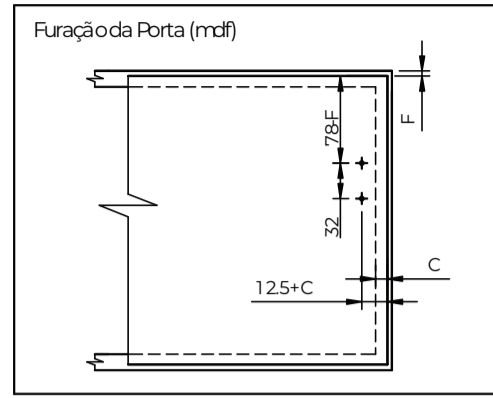
**Dimensões para instalação:**



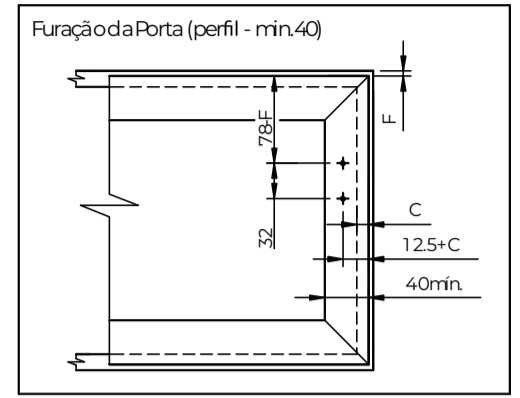
Usar gabarito de furação



Parafuso Ø4x38 (6x)  
(pré furos no gabarito de furação)

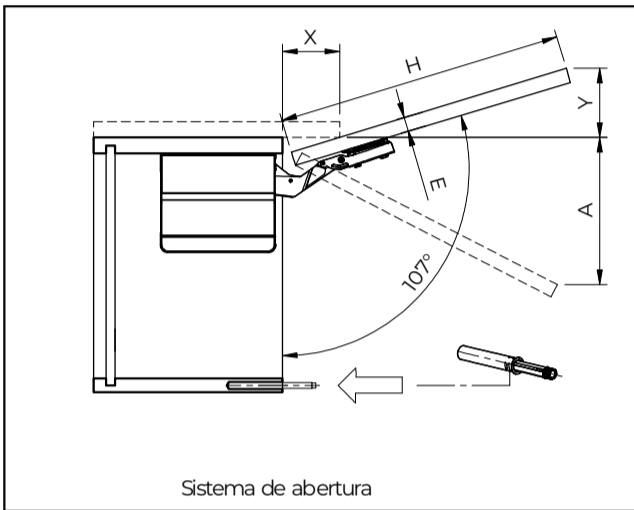


Parafuso Ø4x16 (4x)



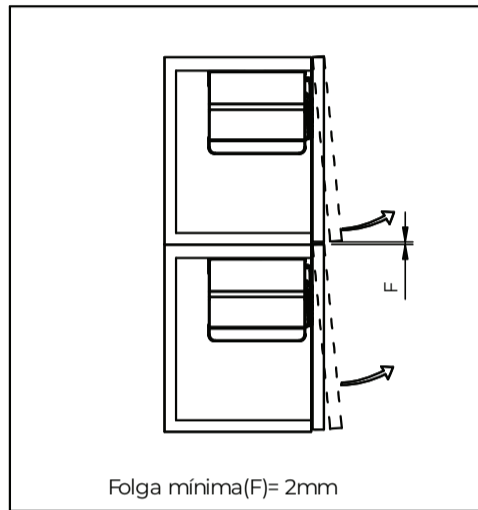
Parafuso M4x11 (4x)

**Posição e abertura da porta**



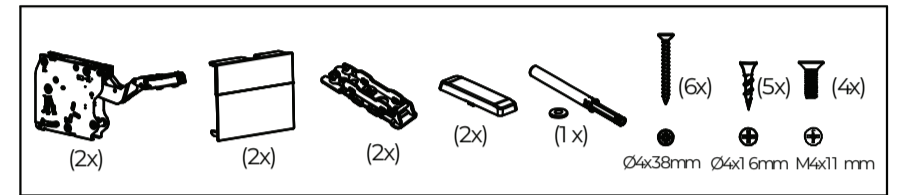
Sistema de abertura

**Ref. portas sobrepostas**



Folga mínima(F)= 2mm

**Componentes:**



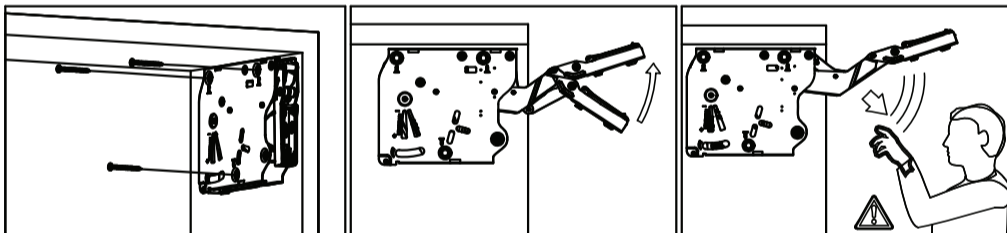
**Dimensões do movel**

Modelo	Dimensão H (18mm)	Dimensão H (15mm)
Touch L	250 - 400mm	250 - 400mm
Touch M	300 - 500mm	350 - 500mm
Touch H	400 - 600mm	450 - 600mm

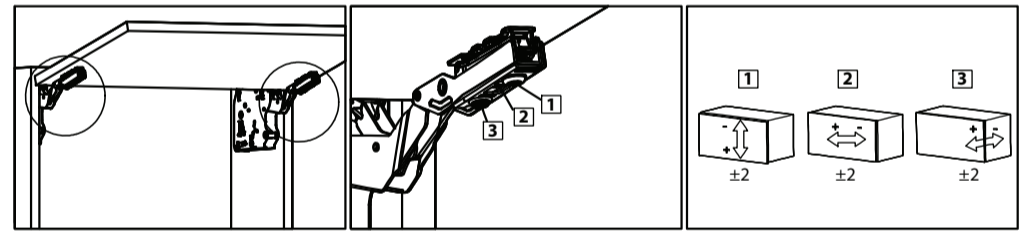
<b>E (mm)</b>	16	19	22	26	28
<b>X (mm)</b>	70	58	49	35	26

**Abertura da Porta**    **Projeção da Porta**  
Sem limitador (107°)     $Y = (H \times 0,29) - 15 + E$

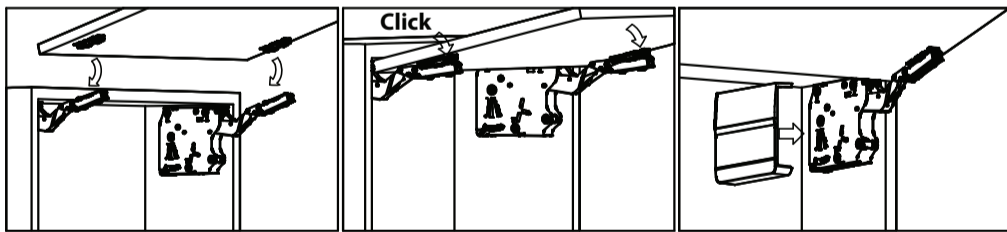
**Fixação e Manuseio do Sistema**



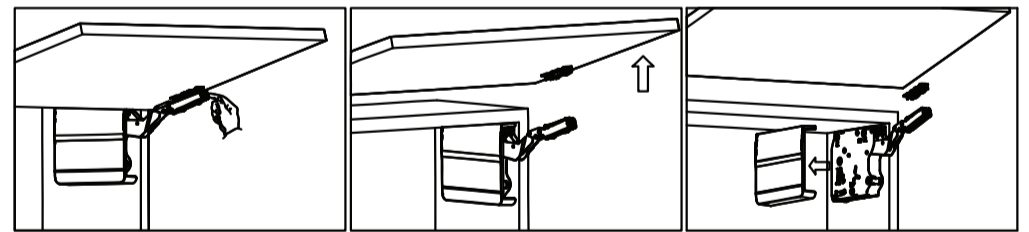
**Regulagens da Porta**



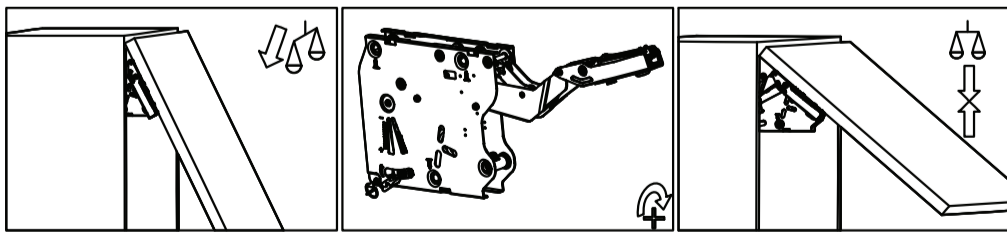
**Montagem da Porta e Capa (Tampa)**



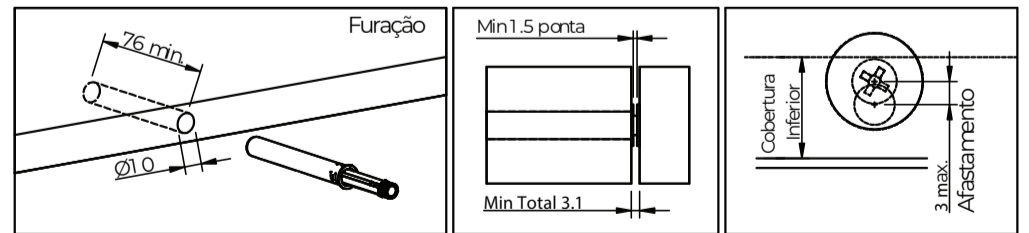
**Remoção de Porta e Capa (Tampa)**



**Ajuste e Regulagem Força (01)**



**Montagem do pulsador magnetico embutido**



**Ajuste e Regulagem Força (02)**

